



## Creating simply beautiful things!

If you have any questions please email me at [blessedbycards@yahoo.com](mailto:blessedbycards@yahoo.com)

Shop 24/7 and for more card ideas, follow me on my blog at [blessedbycards.com](http://blessedbycards.com)

Measurements=inches DSP=Designer Series Paper CS=Cardstock Landscape Position=Long side Portrait Position=short side

### *Weekly Wednesday #92 Last Chance Product Samples*

<https://youtu.be/wmdcpwEFNng>



#### Card #1-Layering Beauty

Petunia Pop CS - 5 ½ x 8 ½; Score at 4¼

Basic Black CS- 3-7/8 x 5-1/8

Basic White CS- 3 ¾ x 5, 4 x 5 ¼

Layering Beauty Stamp Set + Masks

Memento Black Ink

Petunia Pop Ink

Old Olive Ink

Blending Brushes

Liquid glue

#### Directions

1. Score card base in landscape position (aka longer side) in half at 4¼. Fold and burnish card.
2. Stamp floral image on smaller Basic White panel and use the Masks to add color: Petunia Pop for the flowers and Old Olive for the leaves.
3. Stamp greeting with Memento Black ink on card front as shown.
4. Add Basic White panel to the inside and decorate as desired.





Creating simply beautiful things!

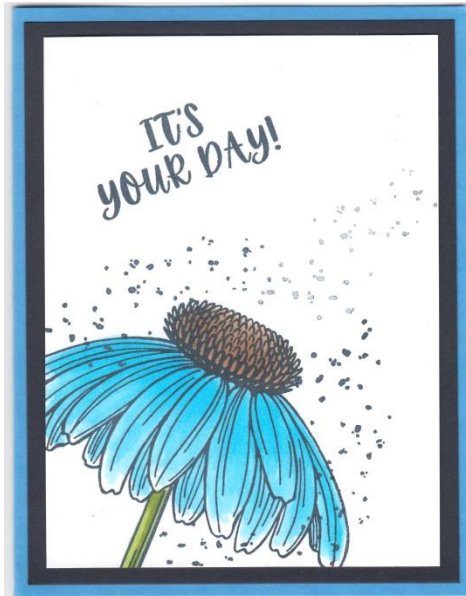
If you have any questions please email me at [blessedbycards@yahoo.com](mailto:blessedbycards@yahoo.com)

Shop 24/7 and for more card ideas, follow me on my blog at [blessedbycards.com](http://blessedbycards.com)

Measurements=inches DSP=Designer Series Paper CS=Cardstock Landscape Position=Long side Portrait Position=short side

*Weekly Wednesday #92 Last Chance Product Samples*

<https://youtu.be/wmdcpwEFNng>



### Card # 2-Coneflower Celebrations

Azure Afternoon CS: 5 ½ x 8 ½ ; Score at 4 ¼

Basic Black CS: 4 x 5 ¼

Basic White: 3 ¾ x 5, 4 x 5 ¼

Coneflower Celebrations Stamp Set

Memento Black Ink

Alcohol Blend Markers: Azure Afternoon, Brown, Granny Apple Green

Liquid Glue

#### Directions

1. Score card base in landscape position (aka longer side) in half at 4¼. Fold and burnish card.
2. Stamp coneflower image on smaller Basic White panel and color with Blend Markers.
3. Stamp greeting from set with Memento Black ink, add dots and attach to Basic Black CS and then to card front.
4. Add Basic White panel to the inside and decorate as desired.





## Creating simply beautiful things!

If you have any questions please email me at [blessedbycards@yahoo.com](mailto:blessedbycards@yahoo.com)  
Shop 24/7 and for more card ideas, follow me on my blog at [blessedbycards.com](http://blessedbycards.com)

Measurements=inches DSP=Designer Series Paper CS=Cardstock Landscape Position=Long side Portrait Position=short side

### Weekly Wednesday #92 Last Chance Product Samples

<https://youtu.be/wmdcpwEFNng>



#### Card # 3-Gallery of Blooms

Pecan Pie CS: 5 ½ x 8 ½ ; Score at 4 ¼

Early Espresso CS: 3 ¾ x 5 ½, 3 x 5

Nature Walk DSP: 4 x 5 ½

Basic White CS: 2 x 3 ¾, 4 x 5 ¼

Gallery of Blooms Stamp and Dies

Early Espresso Ink

Liquid Glue

#### Directions

1. Score card base in landscape position (aka longer side) in half at 4¼. Fold and burnish card.
2. Use frame dies to crop DSP and smaller piece of Early Espresso CS.
3. Position Basic White CS over opening of frame and stamp image, stamping off a second time.
4. Attach all frames together and add to Early Espresso panel and then to card front.
5. Add Basic White panel to the inside and decorate as desired.





## Creating simply beautiful things!

If you have any questions please email me at [blessedbycards@yahoo.com](mailto:blessedbycards@yahoo.com)  
Shop 24/7 and for more card ideas, follow me on my blog at [blessedbycards.com](http://blessedbycards.com)

Measurements=inches DSP=Designer Series Paper CS=Cardstock Landscape Position=Long side Portrait Position=short side

### Weekly Wednesday #92 Last Chance Product Samples

<https://youtu.be/wmdcpwEFNng>



#### Card # 4-Gallery of Blooms

Petunia Pop CS: 5 ½ x 8 ½ ; Score at 4 ¼, 4 x 5 ¼

Basic Black CS: 3-1/8 x 4-1/8

Basic White: 3 x 4, 2 x 3 ¼, 4 x 5 ¼

Gallery of Blooms stamp and dies

Gathering Moments stamp set

Memento Black Ink

Eyelet Embossing Folder

Stampin' Cut n Emboss Machine

Alcohol Marker Blends: Petunia Pop, Garden Green, Yellow

Liquid Glue

#### Directions

1. Score card base in landscape position (aka longer side) in half at 4¼. Fold and burnish card.
2. Dry emboss Petunia Pop panel with Eyelet embossing folder and attach to card front.
3. Stamp floral image on small panel of Basic White, color with markers and crop with coordinating die.
4. Stamp greeting on Basic White panel and attach floral image to bottom left-hand corner.
5. Attach greeting to Basic Black panel and then to card front.
6. Add Basic White panel to the inside and decorate as desired.

