



Creating simply beautiful things!

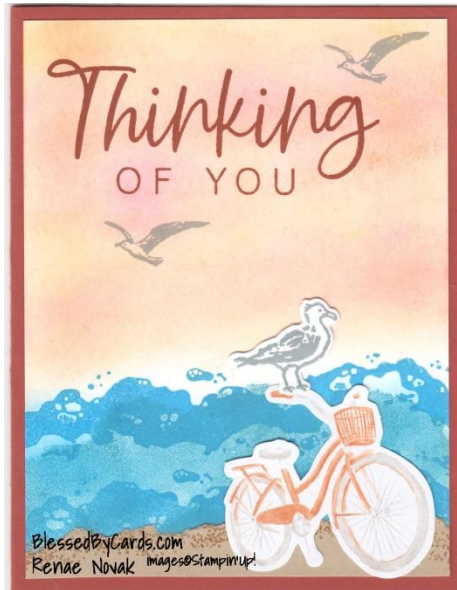
If you have any questions please email me at blessedbycards@yahoo.com

Shop 24/7 and for more card ideas, follow me on my blog at blessedbycards.com

Measurements=inches DSP=Designer Series Paper CS=Cardstock Landscape Position=Long side Portrait Position=short side

Weekly Wednesday #102 Rolling Waves

<https://youtu.be/Rq7CpYSIf2k>



Card # 1-Thinking of You

Cajun Craze CS -5 ½ x 8 ½ ; Score at 4¼

Waterside Retreat DSP: bicycle or Paper Pumpkin

Basic White CS:, 4 x 5 ¼ (2) 2 x 2

Crumb Cake: 2 x 4 ¼

Inks: Cajun Craze, Smoky Slate, Azure Afternoon, Pecan Pie, Daffodil

Delight Timid Tiger, Petunia Pop

Stamps: Rolling Waves, With You In Mind, Relaxing Waterside

Blending Brushes

Stampin' Cut/Emboss Machine

Liquid glue

Directions

1. Score card base in landscape position (aka longer side) in half at 4¼. Fold and burnish card.
2. Stamp waves with Azure Afternoon ink on bottom of Basic White panel.
3. Use Blending Brushes to add sky with Daffodil Delight, Timid Tiger, and Petunia Pop ink.
4. Tear Crumb Cake strip and add to bottom of card to create sand. Use sand dune stamp to add Pecan Pie ink to create some dimension.
5. Stamp greeting w/Cajun Craze ink. Add bicycle cut out from Paper Pumpkin kit or cut a bike from DSP.
6. Stamp and crop sea gull and attach to bike handle. Stamp sea gulls in the sky using Smoky Slate ink. Attach panel to card front as shown.
7. Add Basic White layer to the inside and decorate as desired.





Creating simply beautiful things!

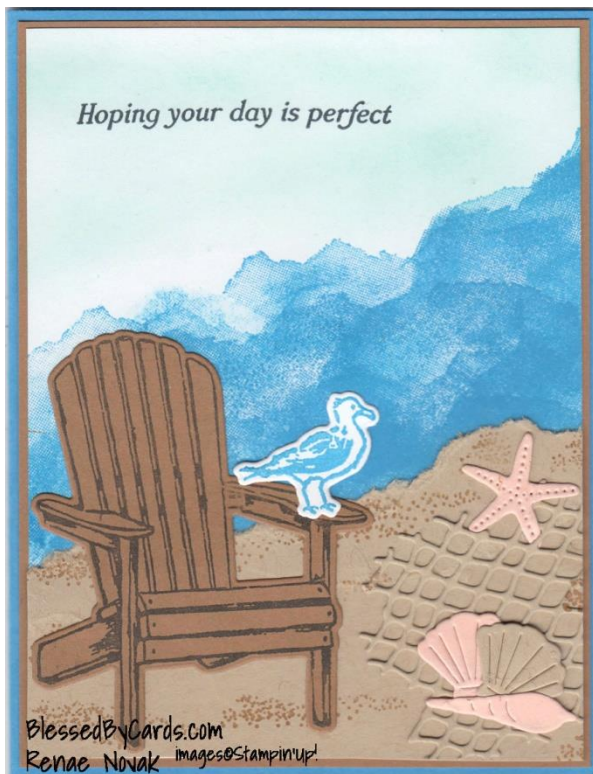
If you have any questions please email me at blessedbycards@yahoo.com

Shop 24/7 and for more card ideas, follow me on my blog at blessedbycards.com

Measurements=inches DSP=Designer Series Paper CS=Cardstock Landscape Position=Long side Portrait Position=short side

Weekly Wednesday #102 Rolling Waves

<https://youtu.be/Rq7CpYSlf2k>



Card #2#-Perfect Day

Azure Afternoon CS - 5 ½ x 8 ½; Score at 4¼

Pecan Pie CS: 4-1/8 x 5-3/8, 3 x 3 ½

Basic White CS: 4 x 5 ¼ (2) 1 ½ x 1 ½

Petal Pink CS: 2 x 3

Crumb Cake CS: 4 x 5

Stamps: Rolling Waves, Relaxing Waterside Bundle,
Sunset Coast Dies

Inks: Pool Party, Azure Afternoon, Early Espresso Ink
Liquid glue

Directions

1. Score card base in landscape position (aka longer side) in half at 4¼. Fold and burnish card.
2. Stamp waves on the diagonal using Azure Afternoon ink on Basic White panel.
3. Use Blending Brush and Pool Party ink to add color to sky. Stamp greeting w/Early Espresso ink.
4. Tear Crumb Cake CS & layer on bottom of white panel to create a beach. Add dotted dunes with Pecan ink.
5. Crop Chair, sea gull, netting, starfish and sea shells. Add to card front as shown.
6. Add Basic White panel to the inside and decorate as desired.

